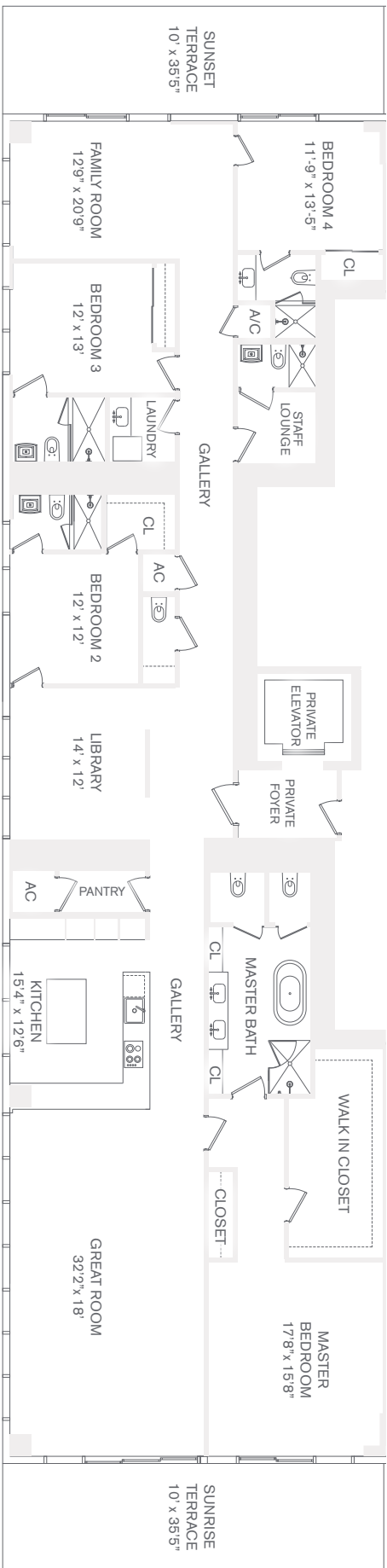


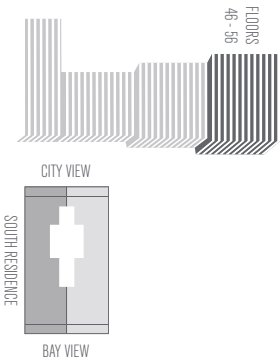
RESIDENCE
F

4 BEDROOM / 5.5 BATH
(CONVERTIBLE TO 5 OR 6 BEDROOMS)

FLOORS 46-56
SOUTH RESIDENCE



GREAT ROOM | FAMILY ROOM | LIBRARY | SUNRISE & SUNSET TERRACES | PRIVATE ELEVATOR & FOYER



UNDER A/C:	3,891 SQ. FT.	361 M ²
TERRACE:	710 SQ. FT.	66 M ²
TOTAL:	4,601 SQ. FT.	427 M²



ORAL REPRESENTATIONS CANNOT BE RELIED UPON AS CORRECTLY STATING THE REPRESENTATIONS OF THE DEVELOPER. FOR CORRECT REPRESENTATIONS, MAKE REFERENCE TO THIS BROCHURE AND TO THE DOCUMENTS REQUIRED BY SECTION 718.03, FLORIDA STATUTES, TO BE FURNISHED BY A DEVELOPER TO A BUYER OR LESSEE. Shaded square footages and dimensions are measured to the exterior boundaries of the exterior walls and the centerline of interior demising walls between Units and in fact vary from the description and definition of the "Unit" set forth in the Declaration, which generally only includes the interior air space between the perimeter walls and excludes all interior structural components and other common elements. The method used herein is generally found in sales materials and is provided to allow a prospective buyer to compare the Unit's size to the definition of "Unit" in the Declaration, refer to Exhibit "2" to the Declaration of Condominium included in the prospectus. Actual square footages and dimensions may vary from the information provided herein. All floor plans, specifications, and other development plans are proposed and conceptual only, are subject to change, and will not necessarily accurately reflect the final plans and specifications for the development.